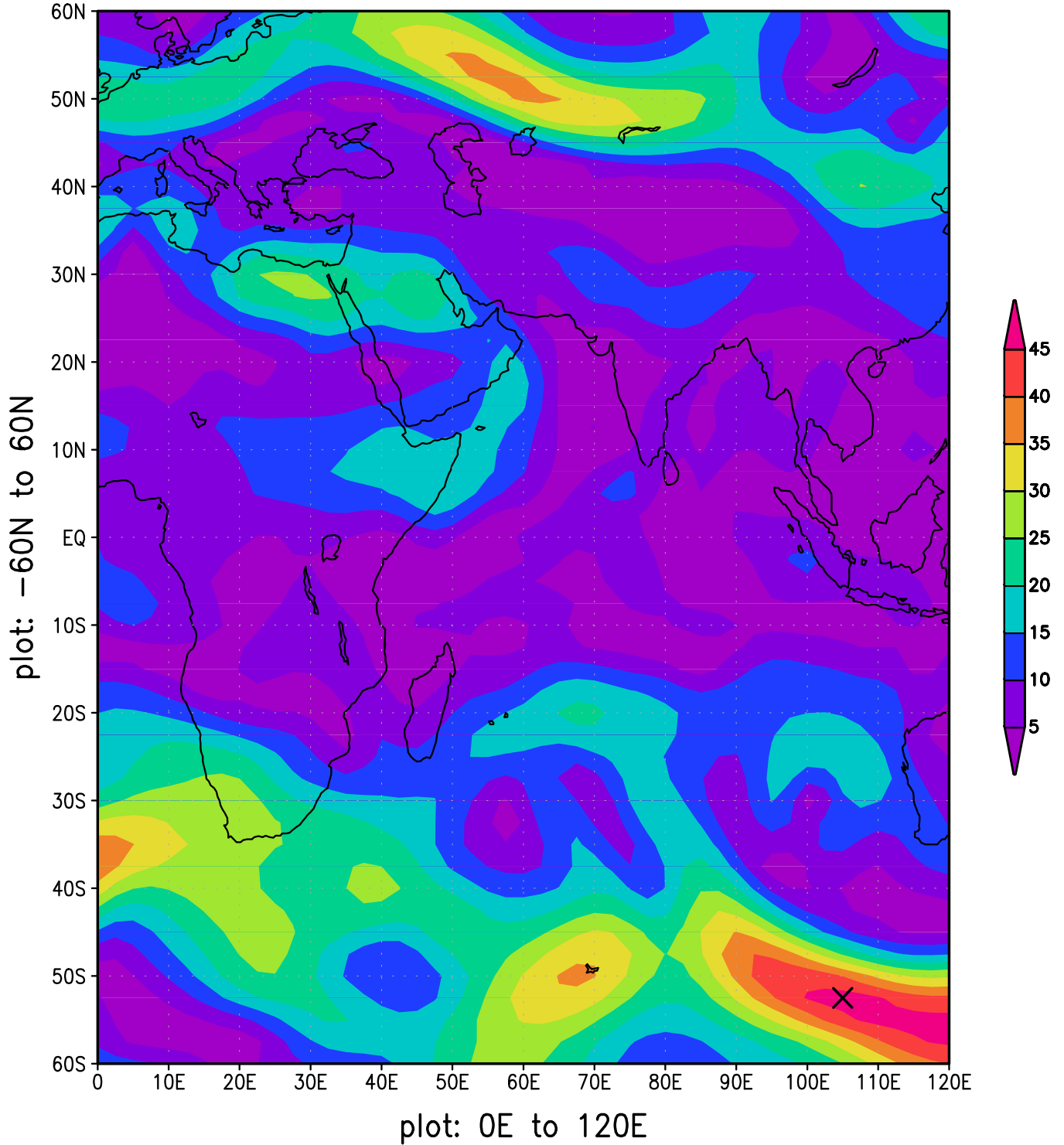


00Z31MAY2005

Wind Magnitude (m/s)

max=47.6004 at:

(x,y,z)=(43,4,6), (lon,lat,lev)=(105E,-52.5N,500hPa)

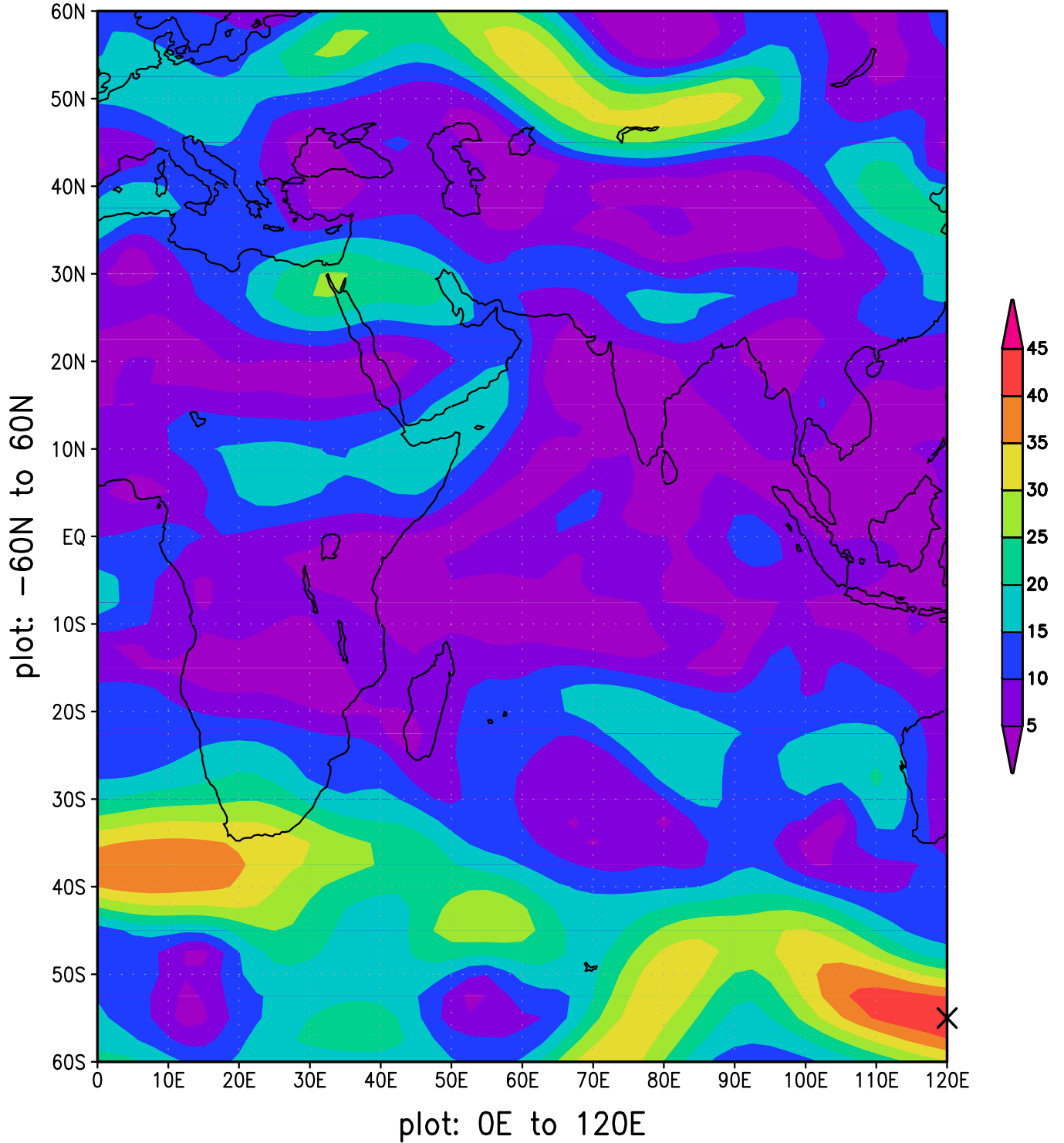


00Z01JUN2005

Wind Magnitude (m/s)

max=45.1799 at:

(x,y,z)=(49,3,6), (lon,lat,lev)=(120E,-55N,500hPa)

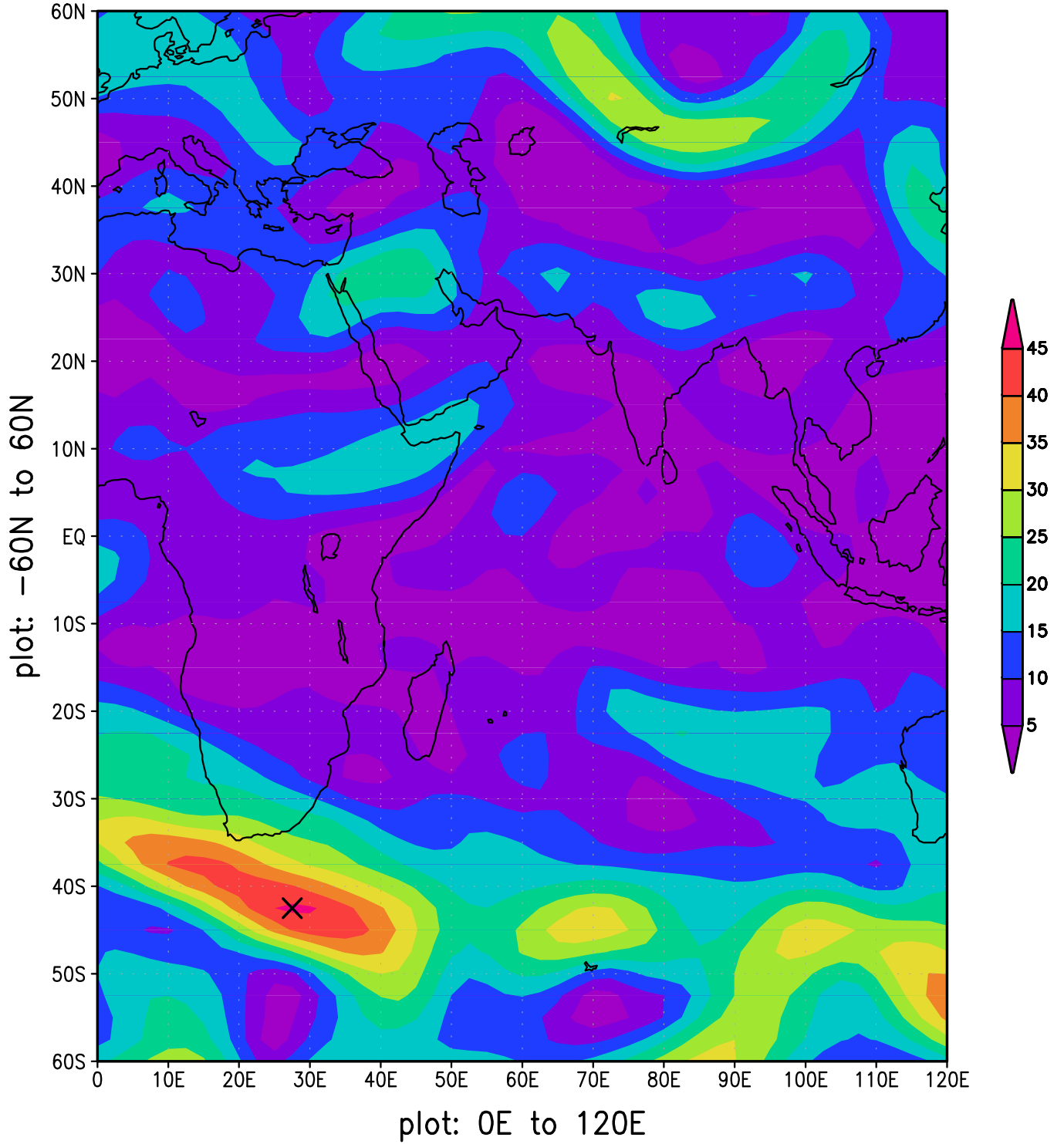


00Z02JUN2005

Wind Magnitude (m/s)

max=46.1657 at:

(x,y,z)=(12,8,6), (lon,lat,lev)=(27.5E,-42.5N,500hPa)

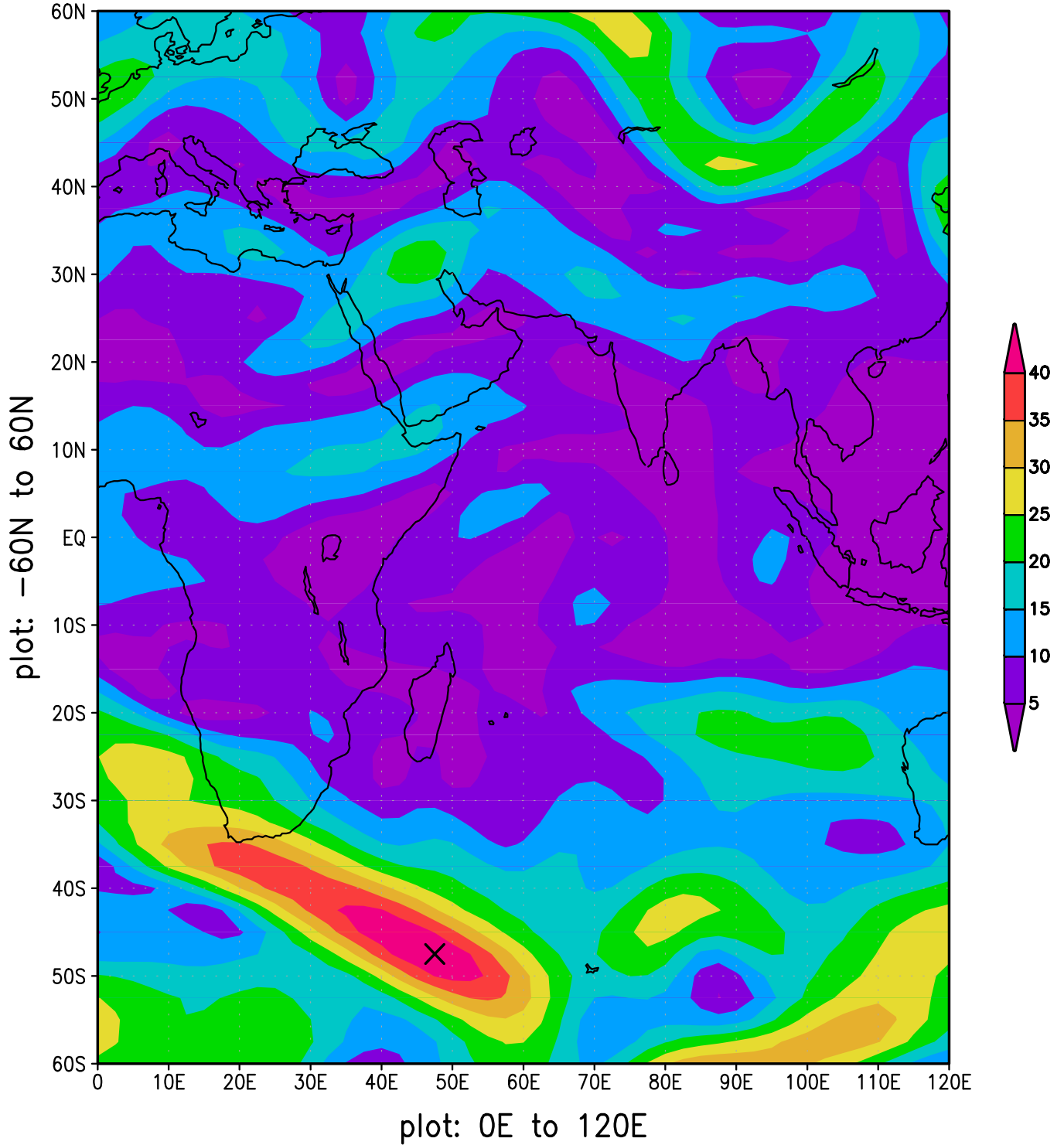


00Z03JUN2005

Wind Magnitude (m/s)

max=44.6787 at:

(x,y,z)=(20,6,6), (lon,lat,lev)=(47.5E,-47.5N,500hPa)

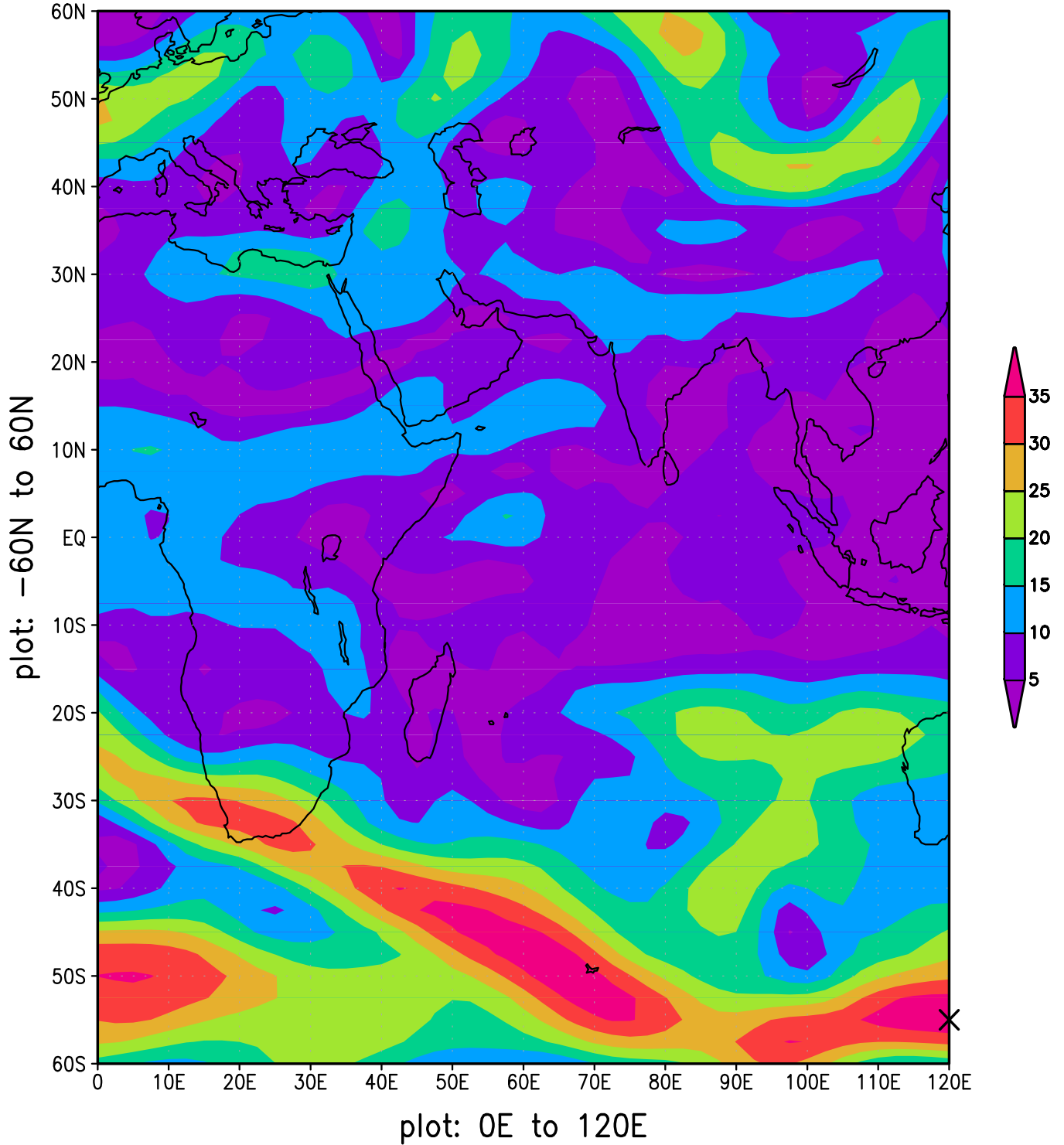


00Z04JUN2005

Wind Magnitude (m/s)

max=39.7003 at:

(x,y,z)=(49,3,6), (lon,lat,lev)=(120E,-55N,500hPa)

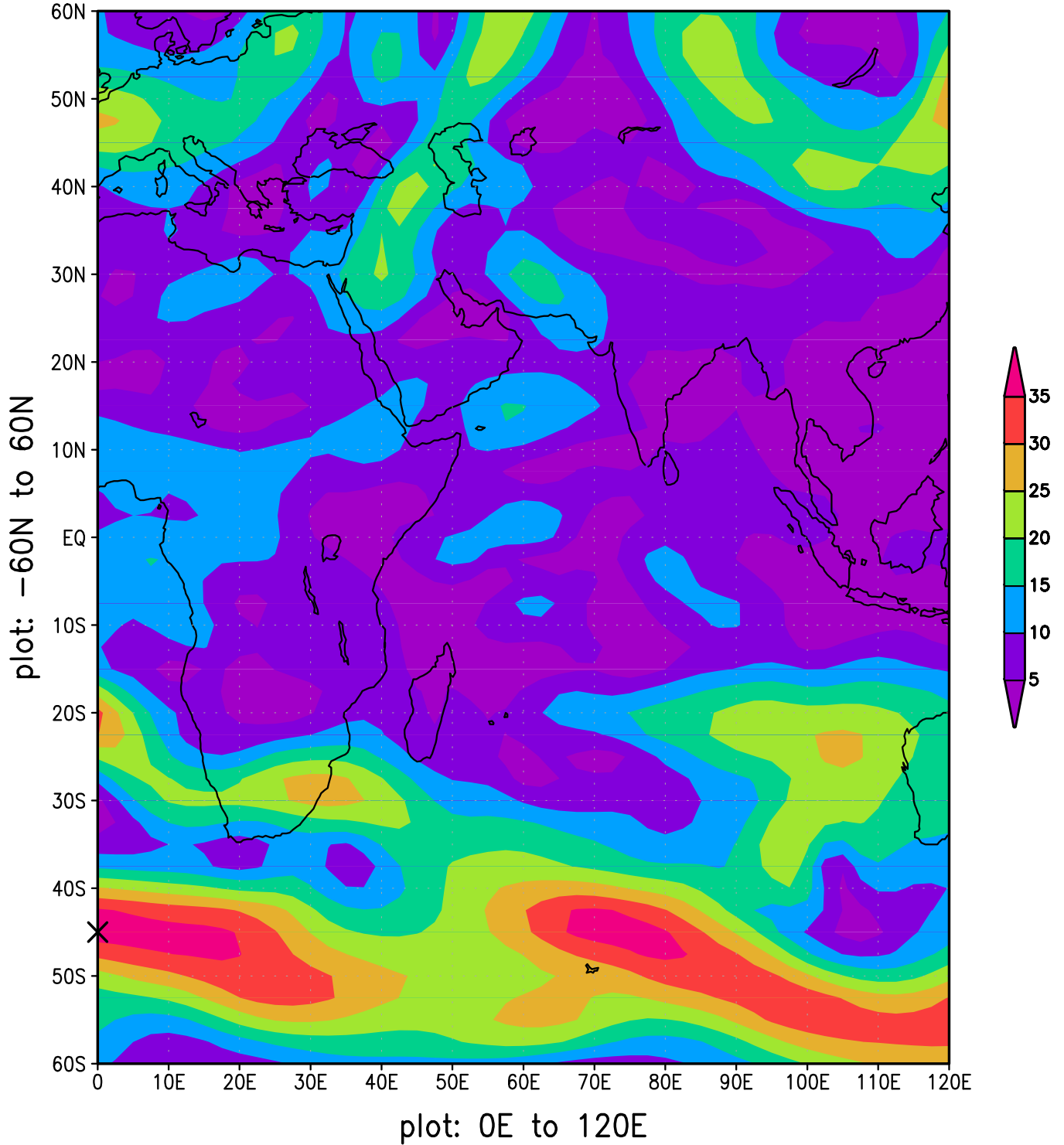


00Z05JUN2005

Wind Magnitude (m/s)

max=37.8954 at:

(x,y,z)=(1,7,6), (lon,lat,lev)=(0E,-45N,500hPa)

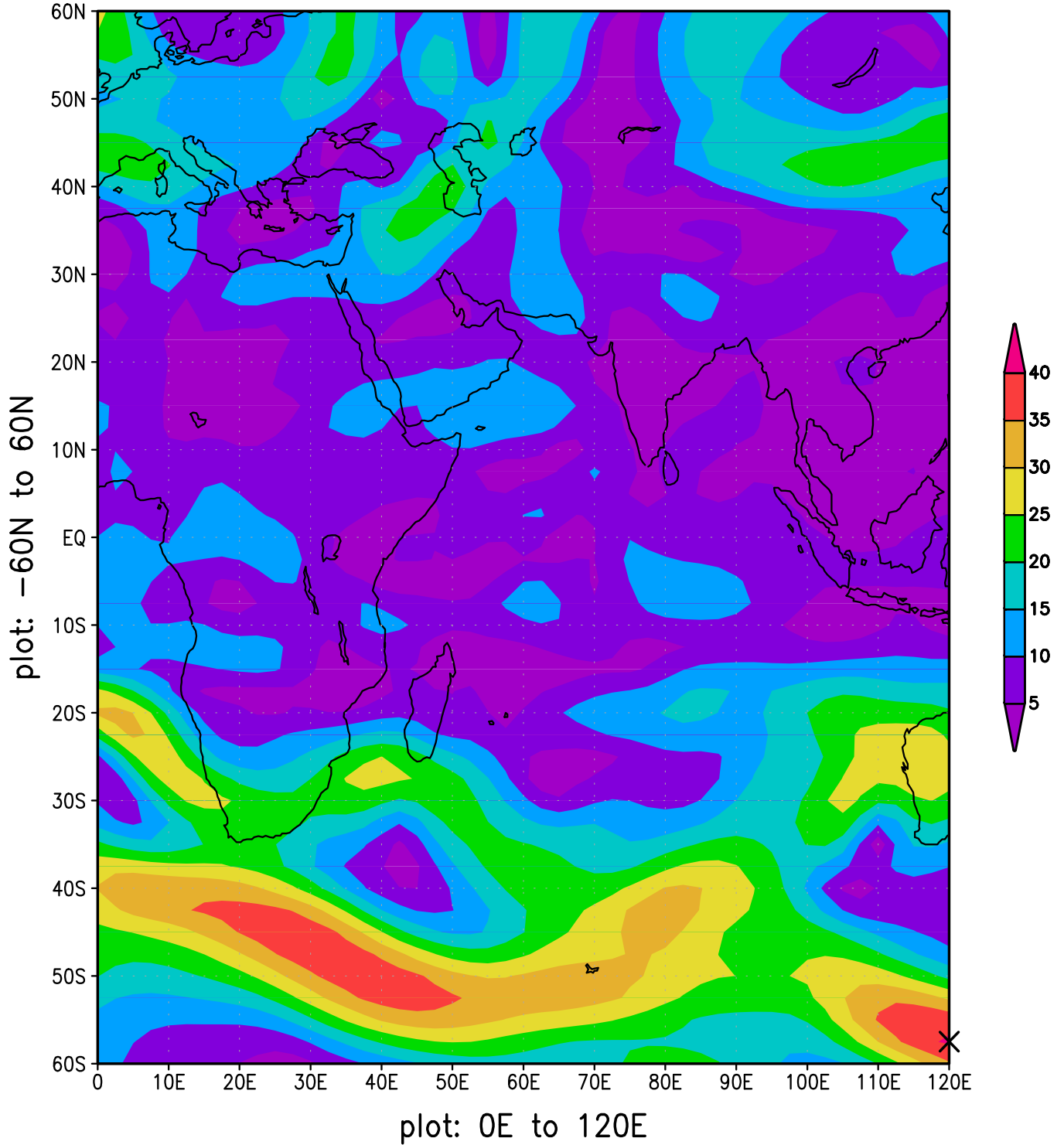


00Z06JUN2005

Wind Magnitude (m/s)

max=40.704 at:

(x,y,z)=(49,2,6), (lon,lat,lev)=(120E,-57.5N,500hPa)



00Z07JUN2005

Wind Magnitude (m/s)

max=40.3043 at:

(x,y,z)=(17,6,6), (lon,lat,lev)=(40E,-47.5N,500hPa)

