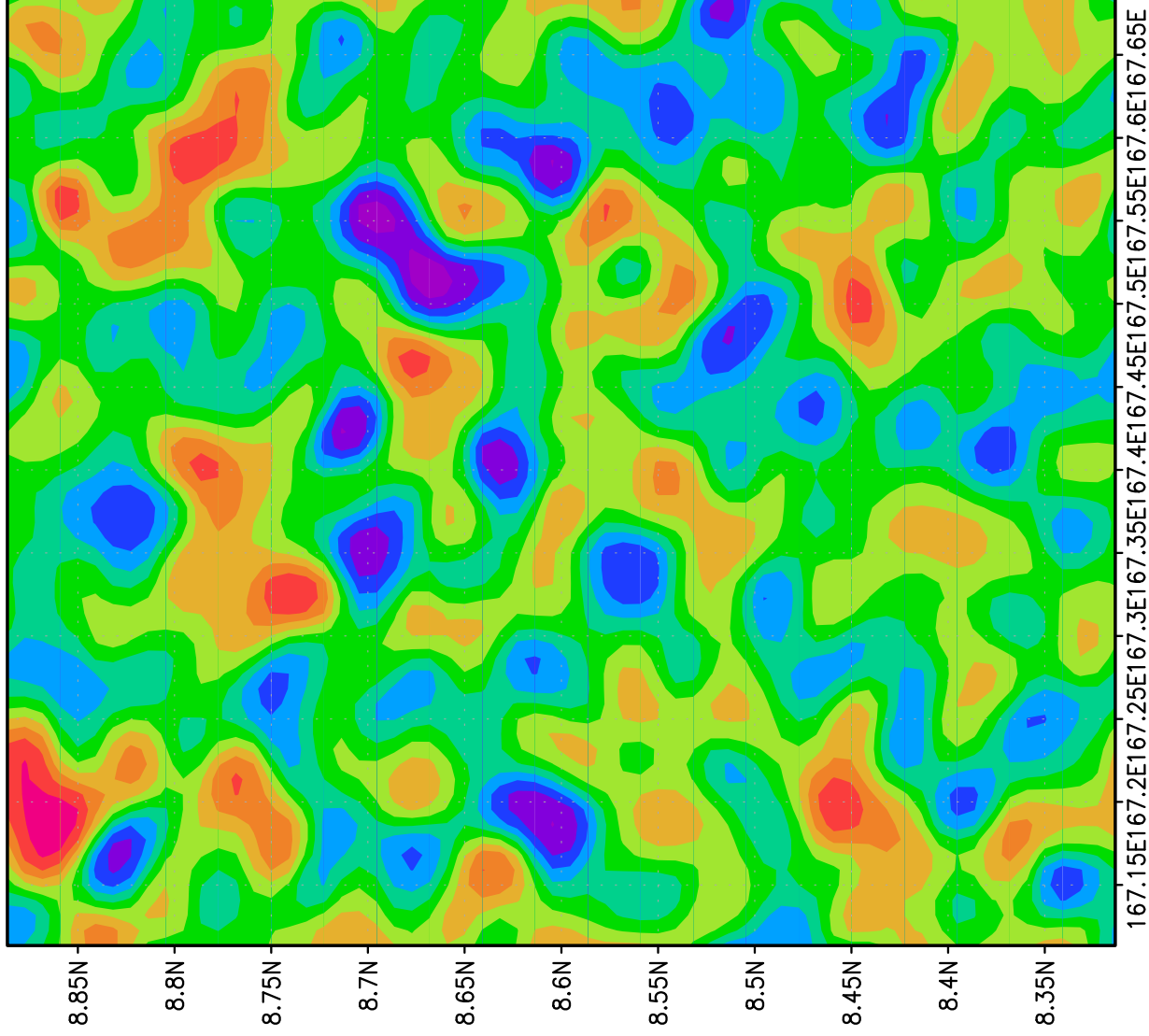
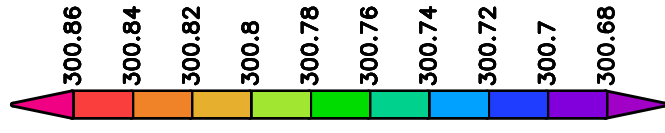
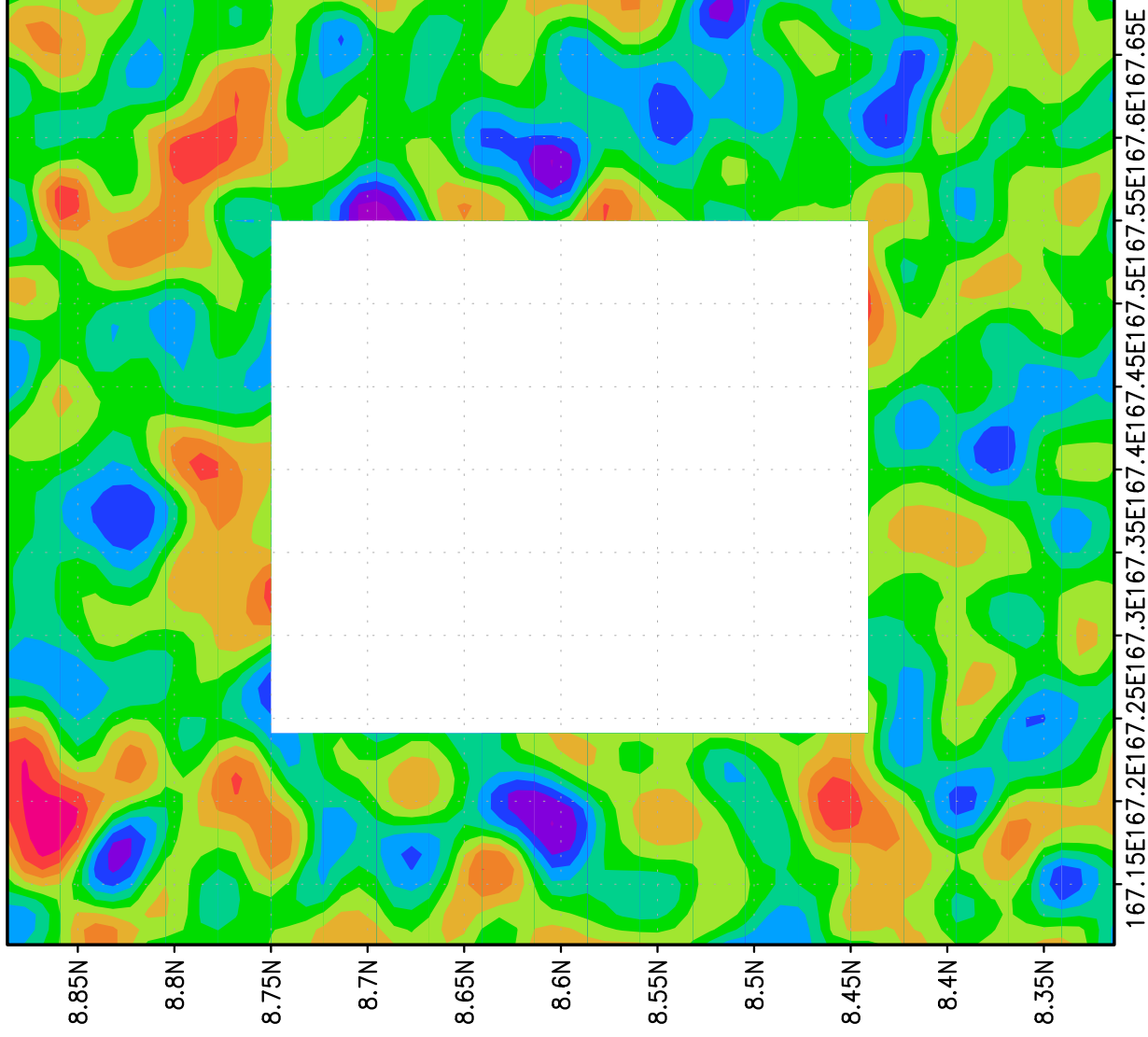


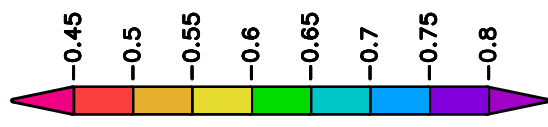
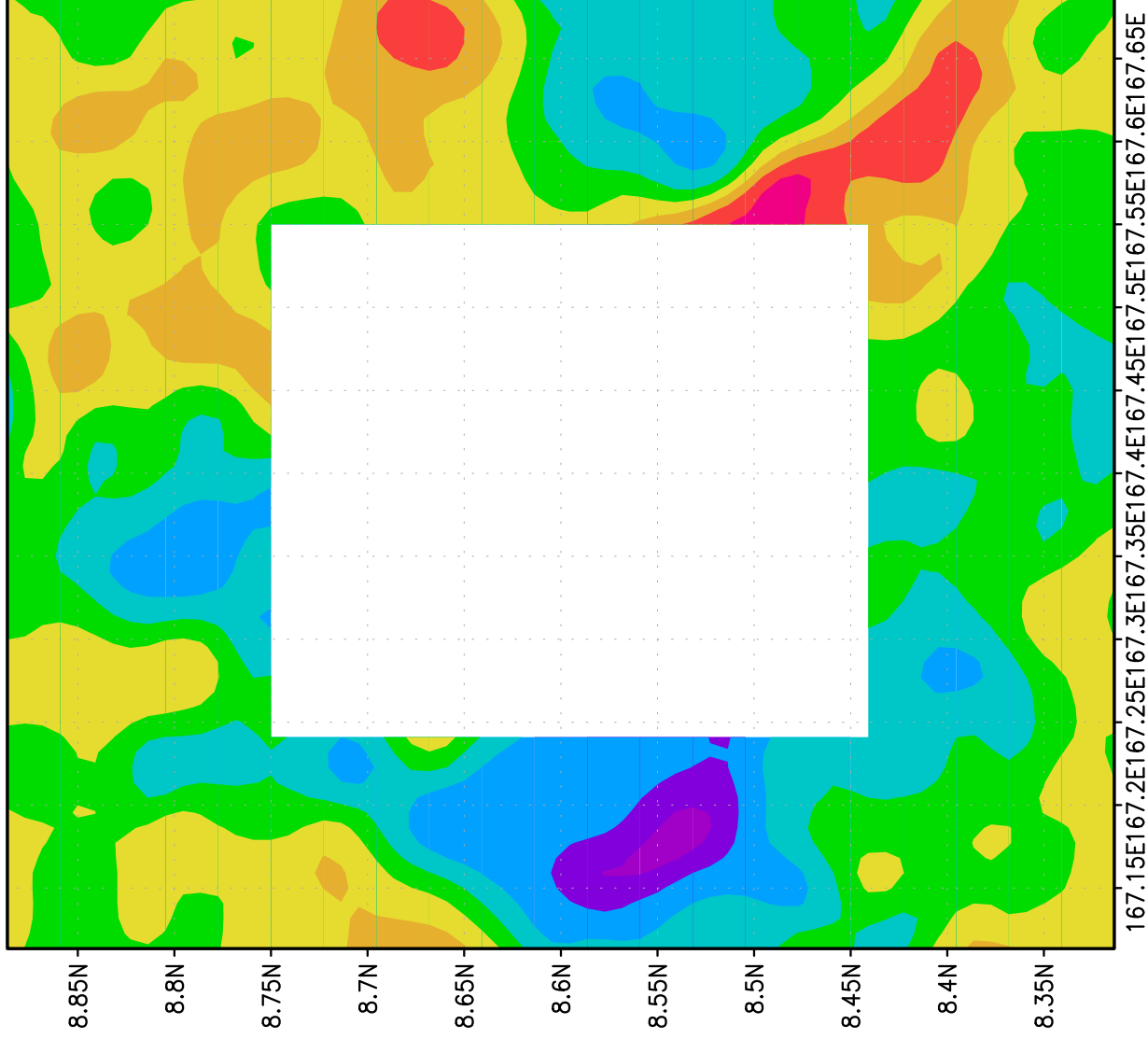
"ta(t=1)"



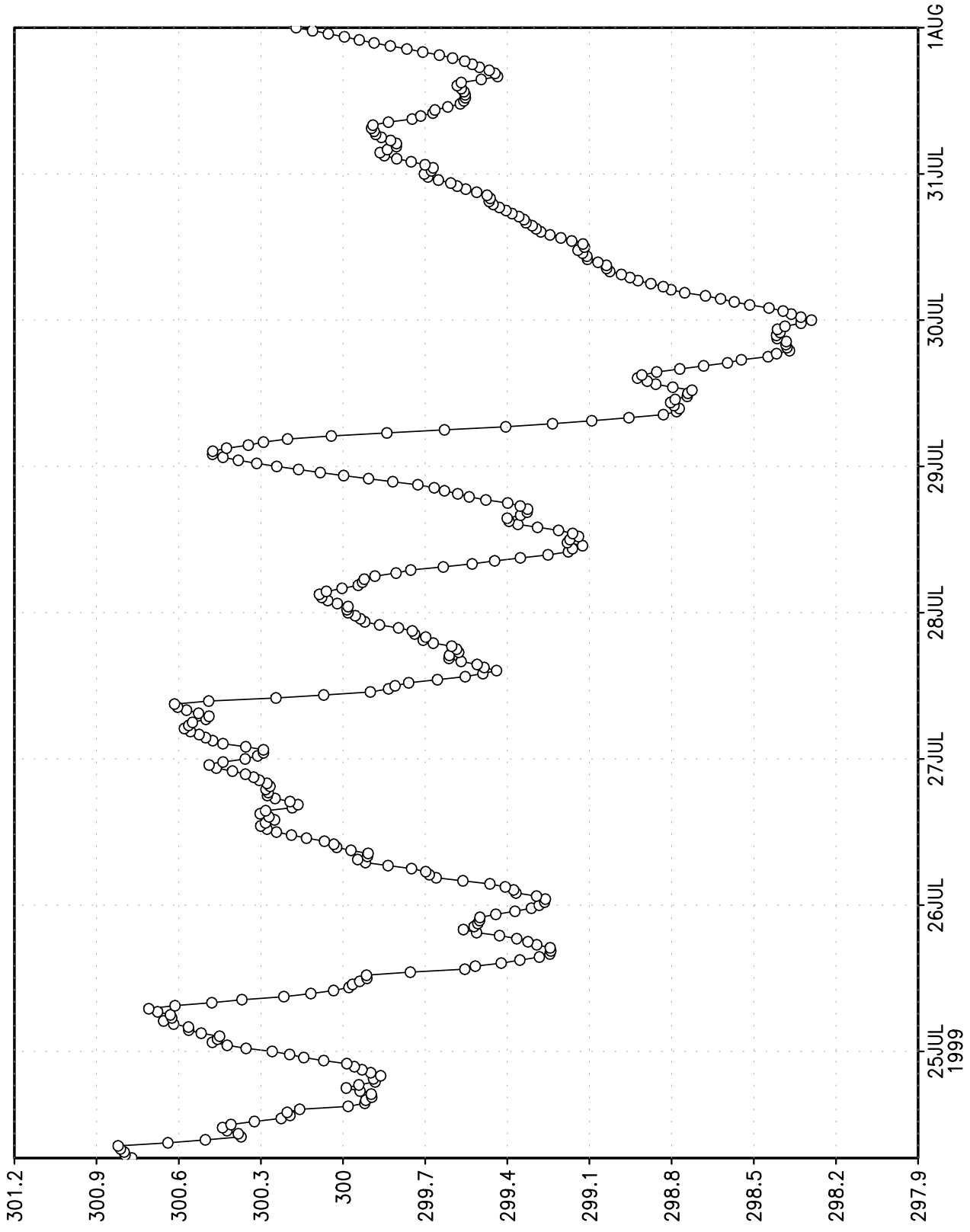
"tanew(t=1)"



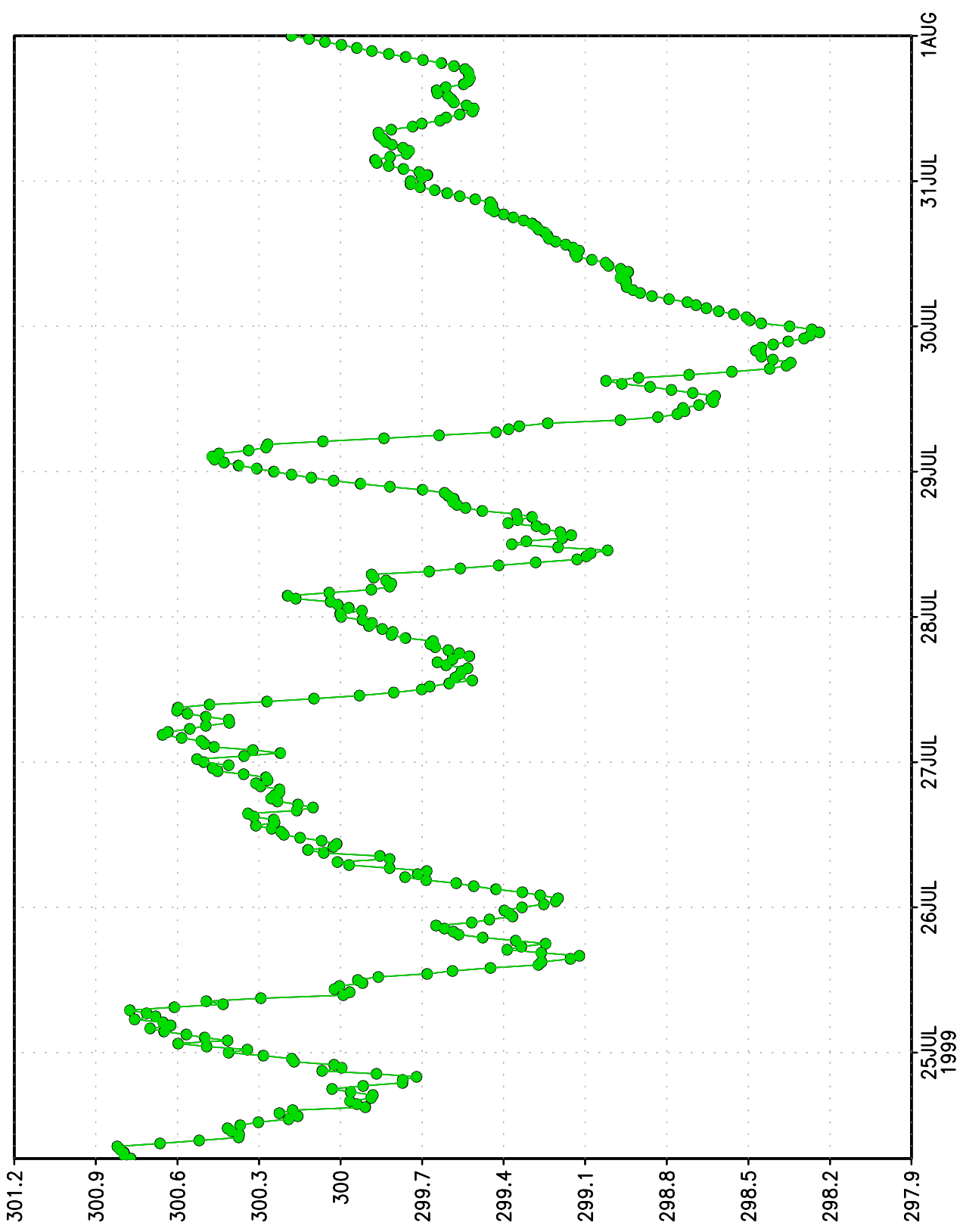
"tanew(t=372)-tanew(t=2)"



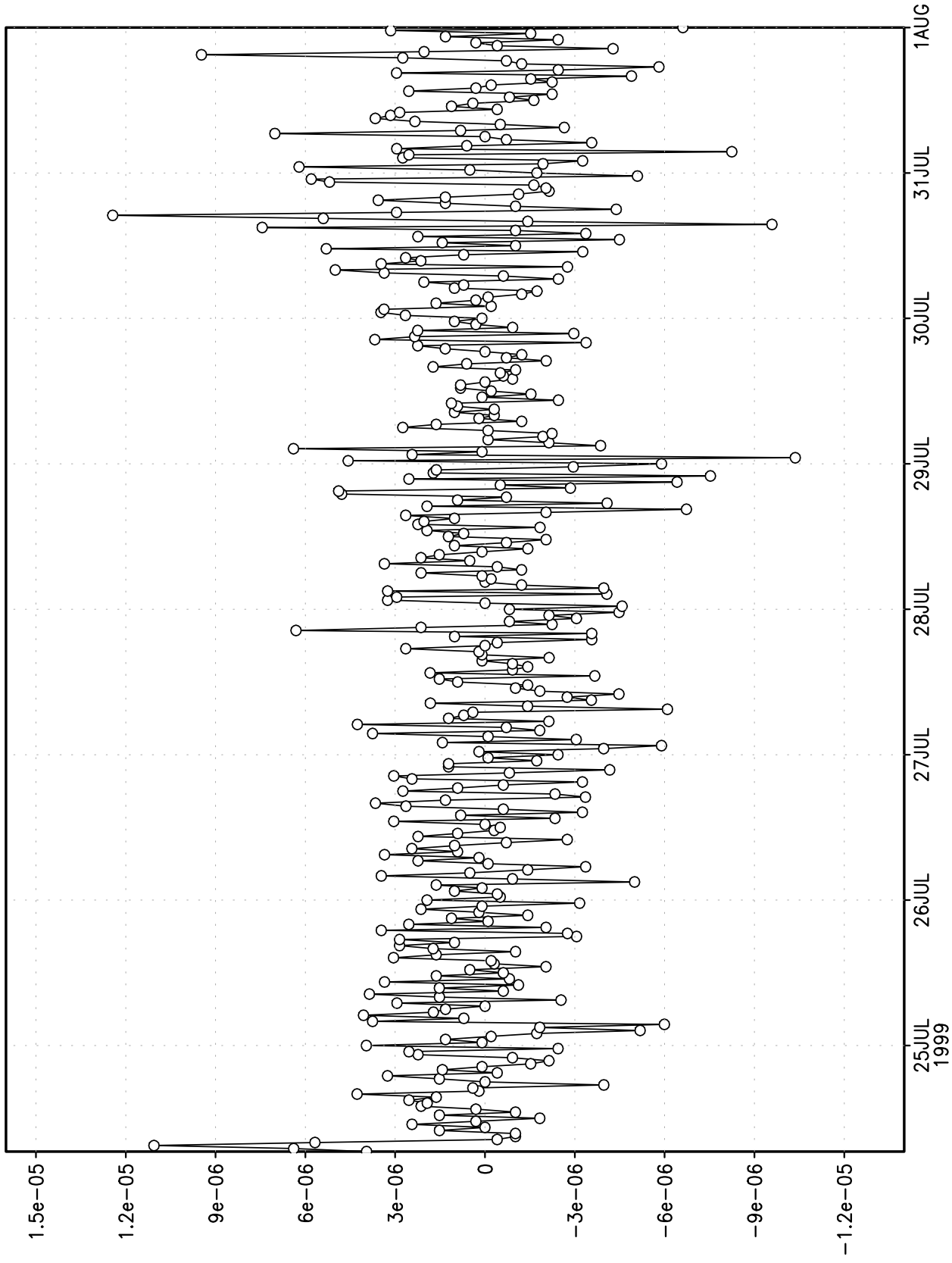
"taa"



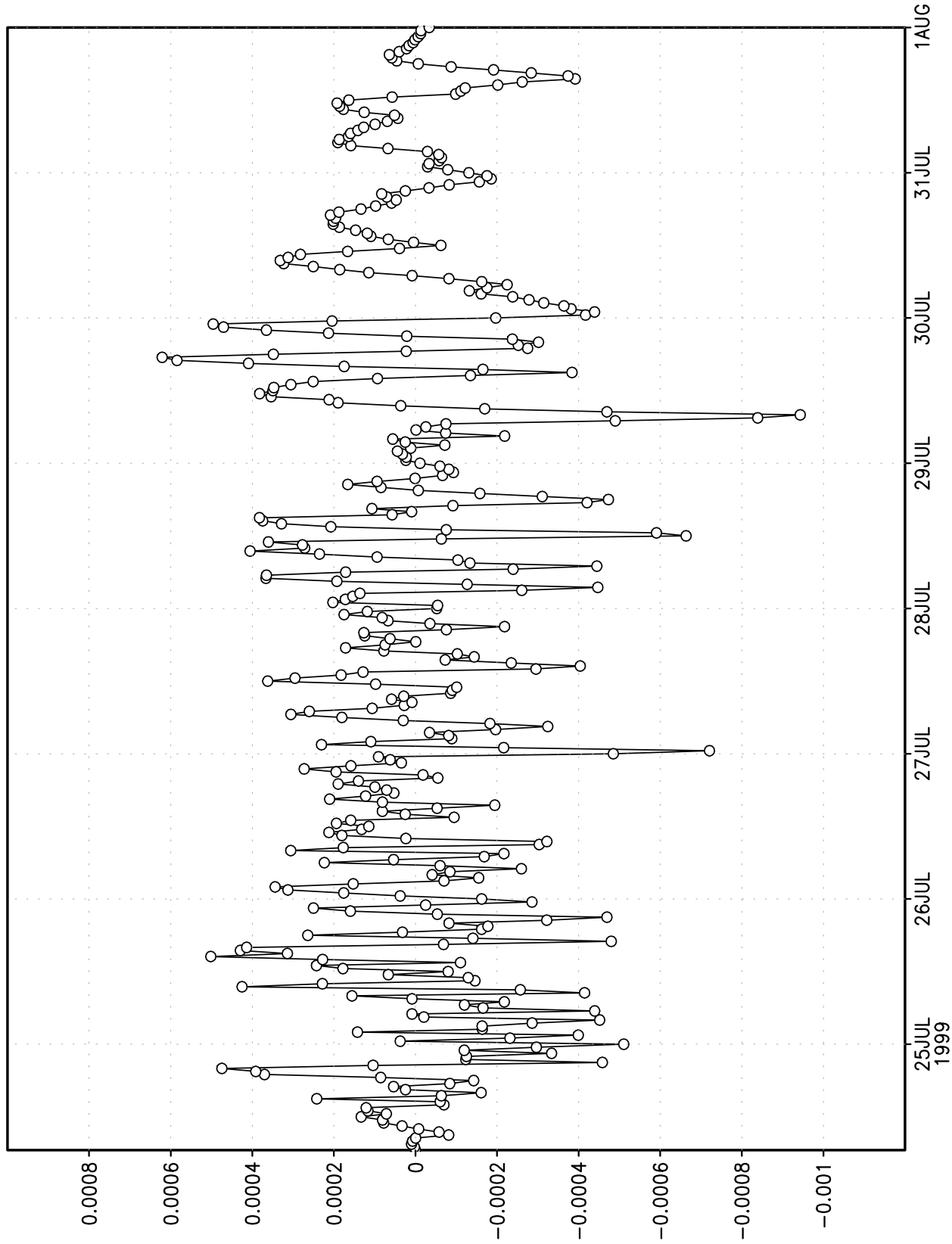
"taa1", "taa2"



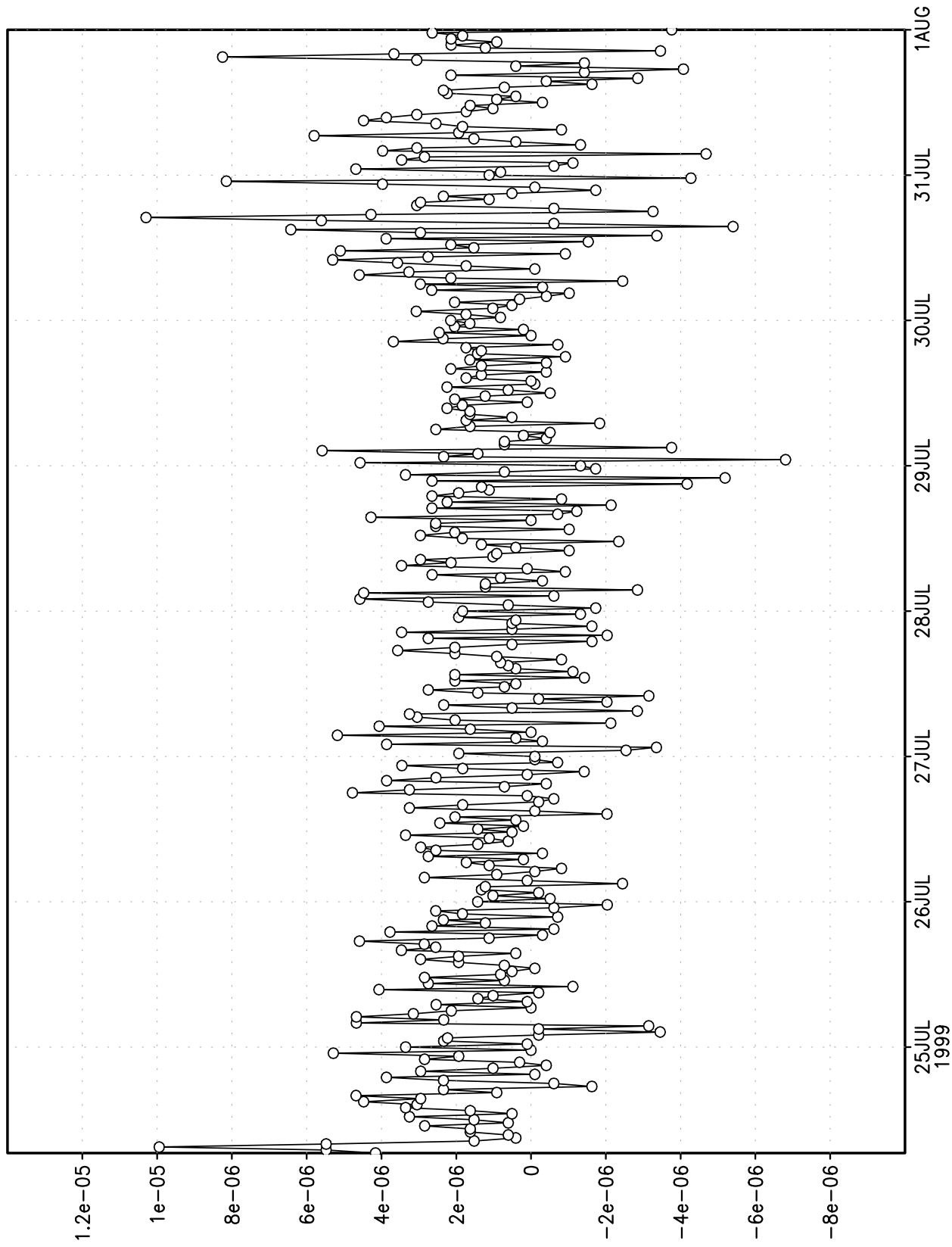
"(taa2-taa1)/taa"



"(taa-taa1)/taa"

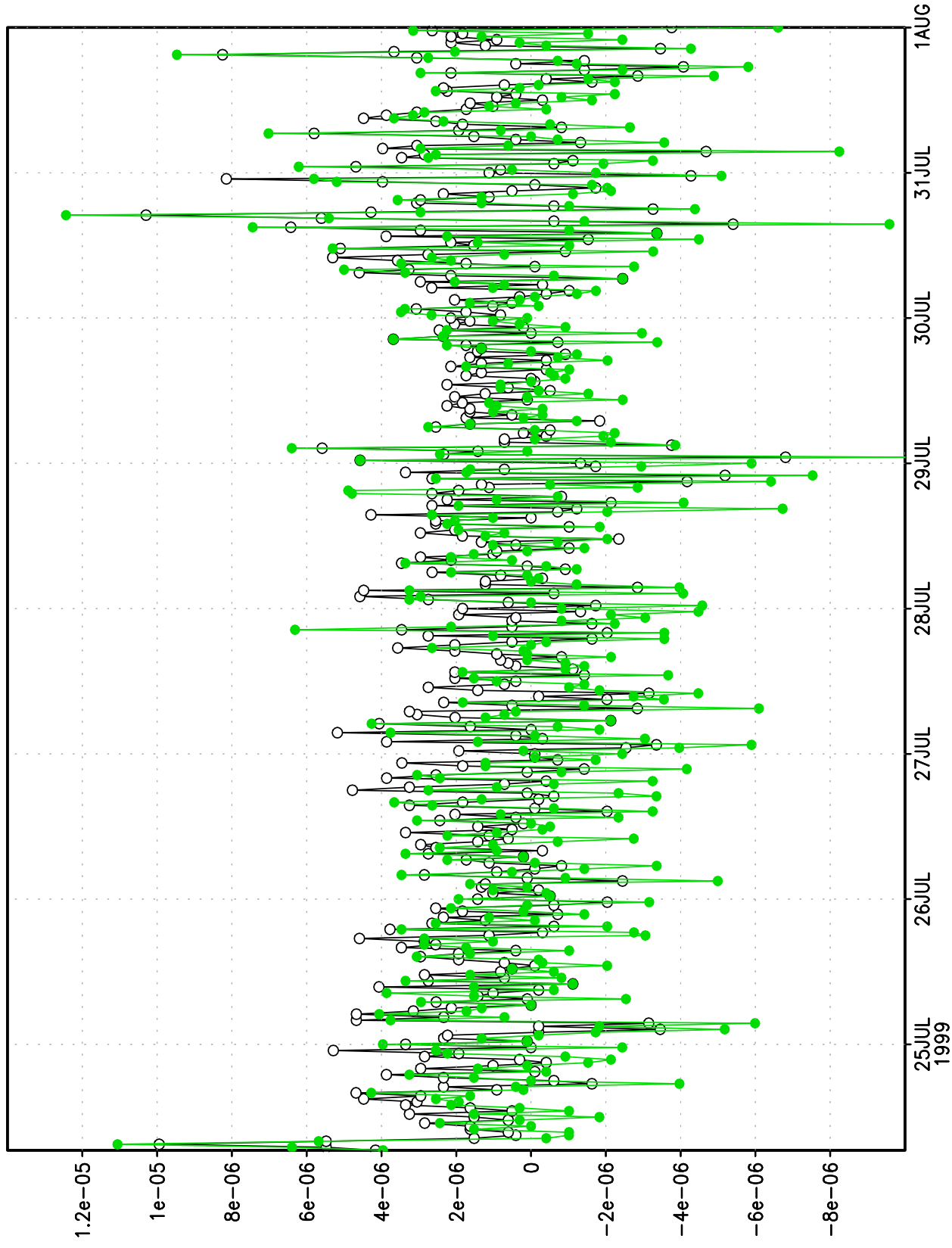


"(taa-tas)/taa"

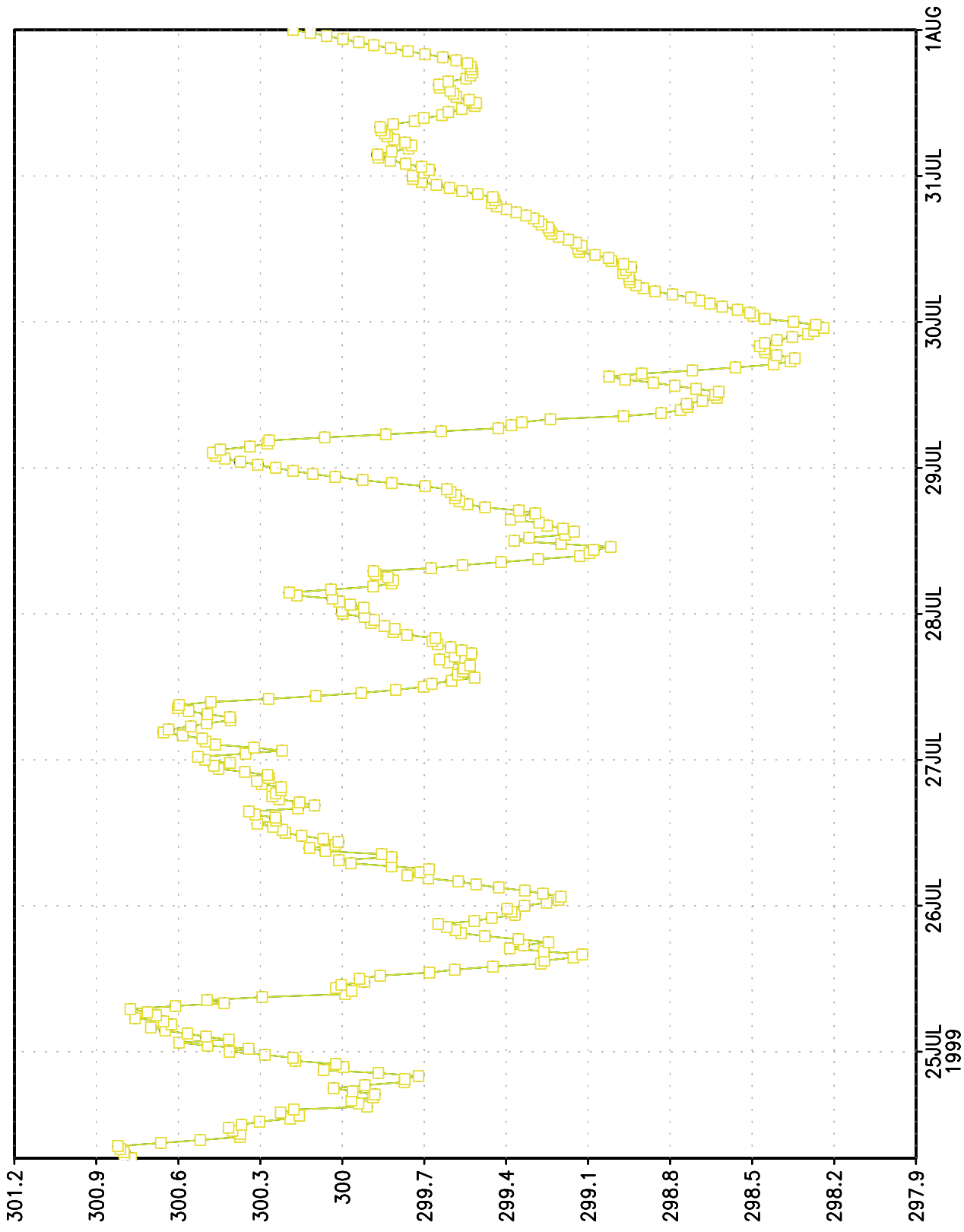




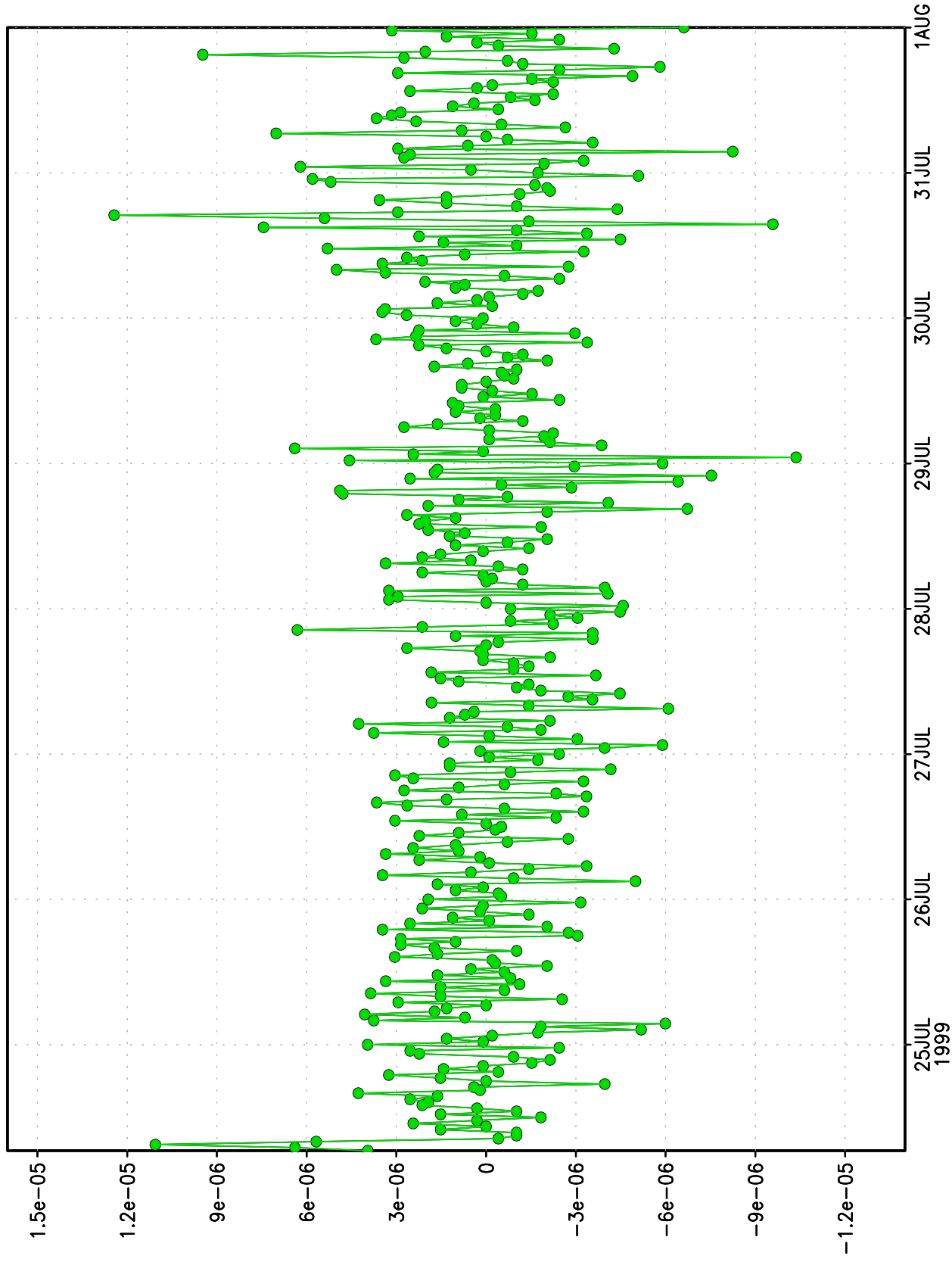
"(taa-tas)/taa", "(taa2-taa1)/taa"



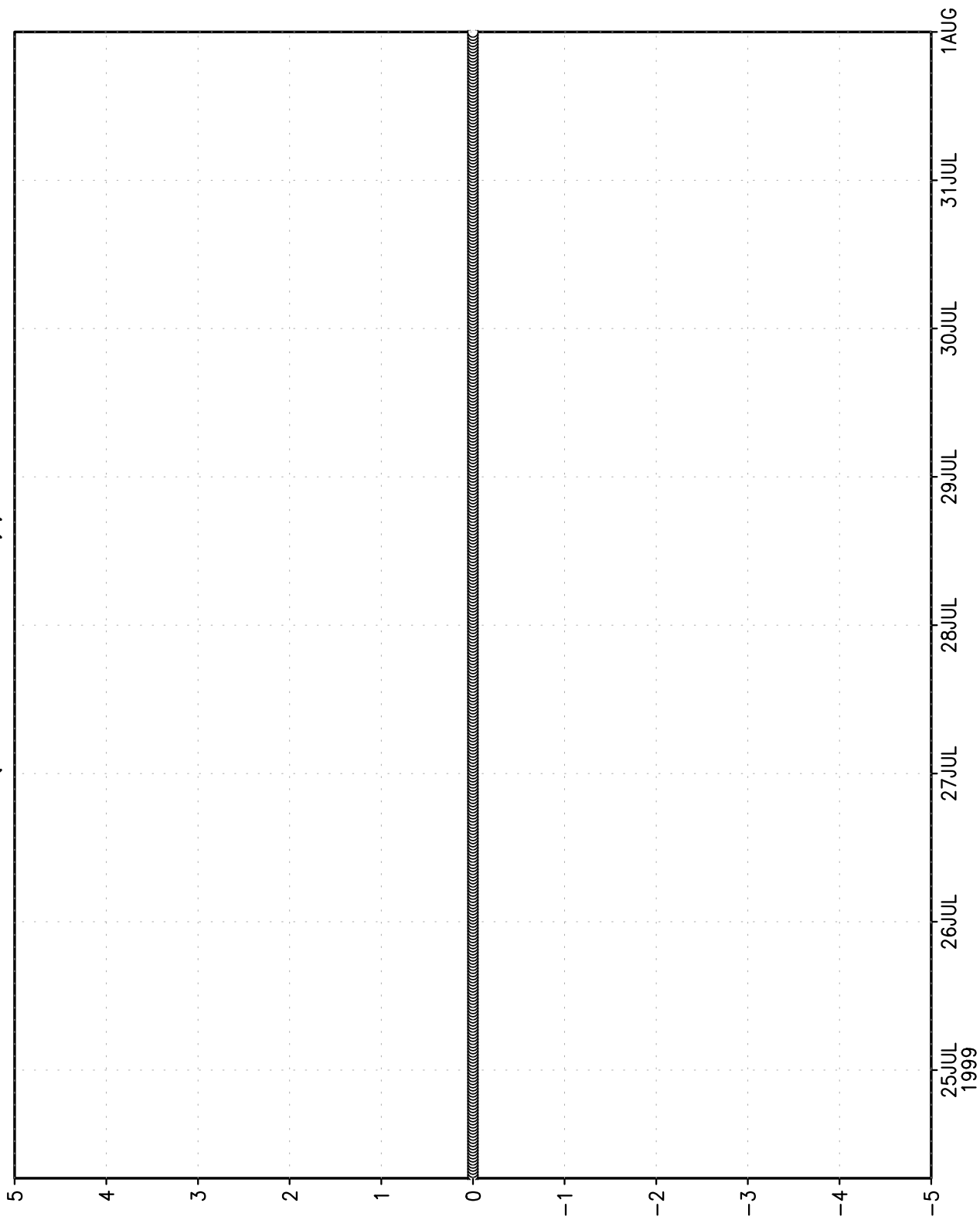
"taa1", "taa2", "taa3"



"(taa2-taa1)/taa", "(taa3-taa1)/taa"



"(taa3-taa2)/taa"



"(taa3-taa)/taa"

